



Stoke Prior First School

Exclusions Policy

Contents

Statement of intent

1. Legal framework
 2. Roles and responsibilities
 3. Grounds for exclusion
 4. The headteacher's power to exclude
 5. Preventative measures
 6. Duty to inform the Governing Body and the LA
 7. Duty to inform the social workers and VSH
 8. Duty to inform parents
 9. Arranging education for excluded pupils
 10. Considering exclusions
 11. Reaching a decision
 12. Notification of considered exclusions
 13. Removing permanently excluded pupils from the school register
 14. Independent review panel
 15. Appointing a SEND expert
 16. The role of a SEND expert
 17. Appointing a clerk
 18. The role of the clerk
 19. The duties of the independent review panel members in the conduct of an independent review panel
 20. Reconsidering reinstatement following a review
 21. Criminal investigations
 22. Training requirements
 23. Using Data
- Appendix
- a) Reviewing the Headteacher's Exclusion Decision

Statement of intent

At Stoke Prior First School, we understand that good behaviour and discipline is essential for promoting a high quality education.

Amongst other disciplinary sanctions, the school recognises that exclusion of pupils may be necessary where there has been a serious breach, or consistent breaches, of the school's Behaviour Policy. Excluding a pupil may also be required in instances where allowing the pupil to remain in school would be damaging to the education and welfare of themselves or others; in all cases, excluding pupils should only be used as a means of last resort.

The school has created this policy to clearly define the legal responsibilities of the headteacher, governing body and LA when responding to pupil exclusions, to ensure that they are dealt with both fairly and lawfully, and in line with DfE statutory guidance.

This policy also aims to secure a pupil's right to an education despite having been excluded, by ensuring that appropriate arrangements are in place.

1. Legal framework

This policy has due regard to all relevant legislation including, but not limited to, the following:

- Education Act 1996
- Education Act 2002
- Education and Inspections Act 2006
- The Education (Provision of Full-Time Education for Excluded Pupils) (England) Regulations 2007
- Equality Act 2010
- The School Discipline (Pupil Exclusions and Reviews) (England) Regulations 2012
- The European Convention on Human Rights (ECHR)

[Updated] This policy also has due regard to statutory and non-statutory guidance, including, but not limited to, the following:

- DfE (2022) 'Suspension and Permanent Exclusion from maintained schools, academies and pupil referral units in England, including pupil movement'
- DfE (2022) 'Behaviour in Schools'
- DfE (2015) 'Special educational needs and disability code of practice: 0 to 25 years'
- DfE (2018) 'Mental health and behaviour in schools'

This policy operates in conjunction with the following school policies:

- Behaviour Policy
- Anti-bullying Policy
- Pupil Code of Conduct
- Special Educational Needs and Disabilities (SEND) Policy
- Social, Emotional and Mental Health (SEMH) Policy
- Child Protection and Safeguarding Policy

Roles and responsibilities

1.1. The LA is responsible for:

- Having due regard to the relevant statutory guidance when carrying out its duties in relation to the education of LAC.
- Arranging suitable full-time education for any pupil of compulsory school age excluded permanently, in coordination with the school.
- Reviewing and reassessing pupils' needs in consultation with their parents where they have an EHC plan and are excluded permanently, with a view to identifying a new placement.
- Arranging for an independent review panel hearing to review the decision of the governing body not to reinstate a permanently excluded pupil where required.
- Arranging the hearing without delay at a time, date and venue convenient for all parties.

- Ensuring the independent review panel consists of three or five members as appropriate, which represent the required categories.
- Appointing a clerk to provide advice to the panel and parties to the review on procedure, law and statutory guidance on exclusions.
- Ensuring all panel members and the clerk have received training within the two years prior to the date of the review.
- If requested by parents, appointing a SEND expert to attend the panel and covering the associated costs of this appointment.

1.2. The governing body is responsible for:

- Providing information to the Secretary of State and LA about any exclusions within the last 12 months.
- Arranging suitable full-time education for any pupil of compulsory school age excluded on a fixed-term basis.
- Considering parents' representations about exclusions within 15 school days of receiving notice if the appropriate requirements are met.
- Where an exclusion would result in a pupil missing a public examination or test, considering the exclusion before this date.
- Considering whether it would be appropriate for a pupil to be permitted onto the school premises to sit the public examination or test.
- Arranging the representation meeting at a time and date convenient to all parties, but in compliance with the statutory time limits.
- Adhering to its responsibilities to consider the reinstatement of pupils.
- Considering the interests and circumstances of the excluded pupil, including the circumstances in which they were excluded, and have due regard to the interests of others at the school.
- Using the civil standard of proof (based on the 'balance of probabilities', it is more than likely that the fact is true) when establishing the facts relating to an exclusion.
- Ensuring clear minutes are taken of the representation meeting.
- Noting the outcome of the representation meeting on the pupil's education record, along with copies of relevant papers for future reference.
- Notifying the pupil's parents, the headteacher and LA of its decision and the reasons for it, without delay.
- Where appropriate, informing parents of where to apply for an independent review panel.
- Informing parents of relevant sources of information.
- Ensuring a pupil's name is removed from the school admissions register, where appropriate.
- Reconvening within 10 school days to reconsider reinstatement of a pupil where directed to do so by the exclusions review panel.
- Using data to evaluate the school's practices regarding intervention, suspension and exclusion.

1.3. The clerk to the exclusions review panel is responsible for:

- Making reasonable efforts to inform the appropriate individuals that they are entitled to:
 - Make written representations to the panel.
 - Attend the hearing and make oral representations to the panel.
 - Be represented.
- Making reasonable efforts to circulate copies of relevant papers at least five school days before the review to all parties.
- Giving all parties details of those attending and their role, once the position is clear.
- Attending the review and ensuring that minutes are produced in accordance with instructions from the panel.

1.4. The headteacher is responsible for:

- Implementing good levels of discipline to ensure all pupils can benefit from the opportunities provided by education and to minimise potential exclusions.
- Applying the civil standard of proof when establishing the facts in relation to an exclusion.
- Complying with their statutory duties in relation to pupils with SEND when administering the exclusion process, as outlined in the Special Educational Needs and Disability (SEND) Policy.
- Considering any contributing factors that are identified after an incident of poor behaviour has occurred, e.g. if a pupil has suffered bereavement, bullying or has a mental health issue.
- Considering the use of a multi-agency assessment for a pupil who demonstrates persistent disruptive behaviour.
- Reviewing the effectiveness of exclusions as a sanction, e.g. if a pupil has received multiple exclusions or is approaching the legal limit for exclusions in an academic year.
- Considering what extra support may be needed to identify and address the needs of individual pupils, particularly those with SEND, eligible for FSM, LAC and those from certain ethnic groups.
- Engaging effectively with parents in supporting the behaviour of pupils with additional needs.
- Determining whether a pupil will be excluded on disciplinary grounds.
- Withdrawing any exclusions that have not been reviewed by the governing body, where appropriate.
- Ensuring any decision to exclude is lawful, rational, reasonable, fair and proportionate.
- Complying with the requirements of the Equality Act 2010 when deciding whether to exclude a pupil.
- Ensuring they have considered their legal duty of care when sending a pupil home following an exclusion.
- Making the decision to exclude based on the evidence available at the time, regardless of any police investigation and/or criminal proceedings.
- Notifying a pupil's parents without delay where the decision is taken to exclude the pupil, including the days on which the parents must ensure

the pupil is not present in a public place at any time during school hours, as well as any other necessary information statutorily required.

- Ensuring that all information provided to parents is clear and easily understood.
- Notifying the governing body and LA of their decision to exclude a pupil where appropriate, as well as the pupil's home authority if required.
- Notifying the governing body once per term of any exclusions not already notified.
- Organising suitable work for excluded pupils where alternative provision cannot be arranged.

2. Grounds for exclusion

- 2.1. The school will only exclude a pupil where it is absolutely necessary, and where all other possible disciplinary sanctions, as detailed in the school's Behaviour Policy, have failed to be successful.
- 2.2. The following examples of behaviour may underline the school's decision to exclude a pupil:
 - Physical assault against a pupil
 - Physical assault against an adult
 - Verbal abuse or threatening behaviour against a pupil
 - Verbal abuse or threatening behaviour against an adult
 - Use, or threat of use, of an offensive weapon or prohibited item
 - Bullying
 - Discriminatory abuse, e.g. racist, homophobic, biphobic, transphobic or ableist abuse
- 2.3. Pupils can be excluded on a fixed-period basis, i.e. up to 45 school days within a year, or permanently. Similarly, pupils can be permanently excluded following a fixed-period exclusion, where further evidence is presented.
- 2.4. In all cases, the headteacher will decide which exclusion period a pupil will be subject to, depending on what the circumstances warrant.
- 2.5. The school has the power to direct a pupil off-site to improve their behaviour.

3. The headteacher's power to exclude

- 3.1. Only the headteacher has the power to exclude a pupil from the school, and is able to decide whether this is on a fixed-period or permanent basis. All exclusions will only be issued on disciplinary grounds.
- 3.2. The headteacher is able to exclude pupils from the premises where their behaviour is disruptive during lunchtime. All lunchtime exclusions will be counted as half of a school day.

- 3.3. The headteacher is able to consider a pupil's disruptive behaviour outside of the school premises as grounds for exclusion, in accordance with the school's Behaviour Policy.
- 3.4. Any decision made to exclude a pupil will be lawful, proportionate and fair, with respect to legislation relating directly to exclusions and the school's wider legal duties, including the ECHR.
- 3.5. All exclusions will be formally recorded on the pupil information system.
- 3.6. When sending a pupil home following any exclusion, the headteacher will ensure that they exercise their duty of care at all times and will always inform the parents.
- 3.7. The headteacher will apply the civil standard of proof when responding to the facts relating to an exclusion, i.e. that 'on the balance of probabilities' it is more likely than not that the facts are true.
- 3.8. The headteacher may withdraw any exclusion that has not already been reviewed by the governing body.
- 3.9. At all times, the headteacher will take into account their legal duties under the Equality Act 2010 and the 'Special educational needs and disability code of practice: 0 to 25 years', ensuring that they do not discriminate on any grounds, e.g. race, sex, disability, and will not increase the severity of a pupil's exclusion on these grounds.
- 3.10. The headteacher will not issue any 'informal' or 'unofficial' exclusions, such as sending a pupil home to 'cool-off', regardless of whether or not the parents have agreed to this.
- 3.11. The headteacher will not use the threat of exclusion as a means of instructing parents to remove their child from the premises.
- 3.12. The headteacher may cancel any suspension or exclusion that has already begun; however, this power will only be used if the suspension or exclusion has not already been reviewed by the governing board. Where a suspension or exclusion is cancelled, the headteacher will notify the pupil's parents, the governing board, the LA, and, where relevant, the virtual school head (VSH) and the pupil's social worker. The headteacher will offer the pupil's parents the opportunity to meet with the headteacher to discuss the circumstances that led to the cancellation of the exclusion, and the pupil will be allowed back into school.
- 3.13. The headteacher will report the number of suspensions and exclusions that have been cancelled, alongside the circumstances around and reasons for cancellation, to the governing board once per term, to allow the governing board to have appropriate oversight.

4. Factors to consider when excluding a pupil

- 4.1. When considering the exclusion of a pupil, the headteacher will:

- Allow the pupil the opportunity to present their case.
 - Take into account any contributing factors that are identified after a case of poor behaviour has occurred, e.g. if the pupil's wellbeing has been compromised, or they have been subjected to bullying.
 - Take into consideration whether the pupil has received multiple exclusions or is approaching the legal limit of 45 excluded days per school year, and whether exclusion is serving as an effective sanction.
 - Consider early intervention to address underlying causes of disruptive behaviour, including liaising with external agencies, to assess pupils who demonstrate consistently poor behaviour.
- 4.2. The headteacher will consider what extra support may be available for vulnerable pupil groups whose exclusion rates are higher, to reduce their risk of exclusion, including the following:
- LAC
 - Pupils eligible for FSM
 - Pupils with SEND
 - Certain ethnic groups
- 4.3. The headteacher will consider avoiding permanently excluding LAC pupils, those with SEMH issues or pupils with an EHC plan.
- 4.4. Where any member of staff has concerns about vulnerable pupil groups and their behaviour, they will report this to the headteacher who will instigate a multi-agency assessment to determine whether the behavioural issues might be as a result of educational, mental health or other needs and vulnerabilities.
- 4.5. Where SEND or SEMH issues are identified, an individual behaviour plan will be created using the graduated response outlined in the school's Behaviour Policy. If the pupil continues to endanger the physical or emotional wellbeing of other pupils or staff, despite exhausting the graduated response process, then exclusion may be considered.
- 4.6. In accordance with the Equality Act 2010, under no circumstances will a pupil with identified SEND or SEMH issues be excluded before the graduated response process has been completed.
- 4.7. Where a pupil with SEND or SEMH issues is permanently excluded because of a SEND or SEMH-related need that could not be met at the school, detailed records will be kept highlighting that these pupils are closely tracked and show that the school has a close relationship with the pupil's next destination.
- 4.8. The headteacher will work in conjunction with the parents of any pupil with additional needs, to establish the most effective support mechanisms.

5. Preventative measures

Before taking a final decision to exclude, the headteacher will consider whether it is in the best interests of all parties to initiate off-site directions or managed moves as preventative measures to exclusion.

Off-site direction

Under the Education Act 2002, the governing body may require any registered pupil to attend at any place outside the school premises for the purpose of receiving educational provision intended to improve their behaviour.

The governing body and the headteacher will decide, in communication with the pupil and their parents, whether off-site direction is an appropriate solution to manage a pupil's behaviour and avoid suspension or exclusion. Where all parties agree to this course of action, the school will work with the pupil and their parents to discuss and agree a plan for the off-site direction, including a proposed maximum period of time that the pupil will be at the alternative provision and any alternative options that will be considered once the time limit has been reached, e.g. managed moves.

The governing body will notify parents, and the LA if the pupil has an EHC plan, in writing with information about the placement no later than two school days before the relevant day.

The school will keep any off-site placements under review by holding review meetings at intervals deemed appropriate by the governing body; the governing body will ensure, where possible, that review meetings are convened at a time suitable for the pupil's parents, and will invite parents in writing to each review meeting no later than six days before that date. Where parents request, in writing, that the governing body hold a review meeting, the governing body will arrange review meetings in response, as soon as is reasonably practicable, unless there has been a review meeting in the previous 10 weeks.

The governing body will decide at each review meeting whether the arrangement will continue and for what period of time; the meeting will also decide arrangements for further reviews. Reviews will be recorded in writing, including any decisions made regarding the placement.

Managed moves

Where it is thought to be in a pupil's best interest to transfer them to another mainstream school permanently, the headteacher and governing board will discuss this with the parents of the pupil, and the LA if the pupil has an EHC plan – managed moves will only go ahead with the voluntary agreement of all parties involved, including the parents and the admission authority of the new school.

The school will ensure that detailed records are kept of any decision to initiate a managed move, including evidence that appropriate initial intervention has been carried out. The school will participate in information sharing with the pupil's new school, including sending data on prior and current attainment, academic potential and any risk management strategies. The school will also cooperate with the pupil's new school to create an effective integration strategy.

Parents who have concerns that a managed move is being forced on them or who are unhappy with a managed move will be referred to the Complaints Policy and Procedure.

6. Duty to inform the governing body and LA

The headteacher will inform the governing body, without delay, of the following:

- Any permanent exclusions (including where a suspension is followed by a decision to permanently exclude the pupil)
- Any suspensions which would result in the pupil being suspended for more than 5 school days in a term (or more than 10 lunchtimes)
- Any suspensions or exclusions which would result in the pupil being absent from an examination or national curriculum test

For any suspensions and exclusions, other than those above, the headteacher will notify the governing body once per term.

The headteacher will inform the LA of all suspensions or exclusions, regardless of their length, without delay.

All notifications to the governing body and LA will include the reasons for suspension or exclusion and the duration of any suspension.

If a pupil who is suspended or excluded lives outside the LA in which the school is located, the headteacher will notify the pupil's 'home authority'.

7. Duty to inform social workers and the virtual school head (VSH)

When a pupil has been suspended or excluded, the headteacher will, without delay, notify the pupil's social worker, if they have one, and the VSH, if they are a looked-after child. This notification will include the period of any suspension and the reasons for suspension or permanent exclusion.

Social workers and/or the VSH will also be informed when a meeting of the governing board is taking place, and will be invited to attend the meeting should they wish to do so.

8. Duty to inform parents

- 8.1. Following the headteacher's decision to exclude a pupil, they will immediately inform the parents, in person or by telephone, of the period of the exclusion and the reasons behind this.
- 8.2. The headteacher will inform the parents in writing (electronically if written permission has been received from the parents for notices to be sent this way) of the following:
 - The reason(s) for the exclusion
 - The length of the fixed-period exclusion or, for a permanent exclusion, the fact that it is permanent
 - Their right to raise any representations about the exclusion to the governing body, including how the pupil will be involved in this and how the representations will be made
 - Their right to attend a meeting where there is a legal requirement for the governing body to consider the exclusion, and the fact that they are able to bring an accompanying individual
 - The arrangements that have been made for the pupil to continue their education prior to the organisation of any alternative provision, or the pupil's return to school

- Relevant sources of free, impartial information
- 8.3. Where the pupil is of compulsory school age, the headteacher will inform the parents by the end of the afternoon session that:
- For the first five days of the exclusion (or until the start date of any alternative provision or the end of the exclusion where this is earlier), parents are legally required to ensure that their child is not present in a public place during school hours without justification, and that parents may receive a penalty fine if they fail to do so.
- 8.4. Where the headteacher has arranged alternative provision, they will also inform the parents of the following:
- The start and end date for any provision of full-time education
 - The address at which the provision will take place
 - Any information necessary for the pupil to identify the person they should report to on the starting date
- 8.5. Where the headteacher is unable to provide information on alternative provision by the end of the afternoon session, they will provide the information in a subsequent written notice without further delay, and within 48 hours of the pupil beginning the provision.
- 8.6. If the alternative provision is due to begin before the sixth day of the exclusion, the headteacher is able to give less than 48 hours of notice, with parental consent.
- 8.7. If the headteacher has decided to exclude the pupil for a further fixed period following their original exclusion, or to permanently exclude them, they will notify the parents without delay and issue a new exclusion notice to parents.

9. Arranging education for excluded pupils

- 9.1. For any fixed-period exclusions of more than five school days, the governing body will arrange suitable full-time education for the pupil, which will begin no later than the sixth day of exclusion.
- 9.2. Where a pupil receives consecutive fixed-period exclusions, these will be regarded as cumulative, and full-time education will still have to be provided from the sixth day of exclusion.
- 9.3. For permanent exclusions, full-time education will also be provided for the pupil from the sixth day of exclusion.
- 9.4. The governing body will not arrange full-time education for any pupil who is currently in their final year of compulsory education, and who does not have any further public examinations to sit.
- 9.5. The governing body is aware that it is beneficial to excluded pupils to begin their alternative education arrangements before the sixth day of exclusion. The

governing body will always attempt to arrange alternative provision before the sixth day of exclusion.

9.6. Where it is not possible to arrange alternative provision during the first five days of exclusion, the school will ensure that they take reasonable steps to set and mark work for the excluded pupil.

9.7. If a pupil with SEND has been excluded, the governing body will ensure that:

- Any alternative provision is arranged in consultation with the pupil's parents, who are able to request preferences.
- When identifying alternative provision, any EHC plan is reviewed/the pupil's needs are reassessed, also in consultation with the pupil's parents.

10. Considering suspensions and exclusions

The governing body will consider any representations made by parents regarding suspensions and exclusions.

Parents and, where requested, a friend or representative, the headteacher, and a member of the LA will be invited to attend any consideration of suspensions and exclusions and will be able to make representations. Any meeting to consider reinstatement of a pupil will be arranged at a date and time convenient for all parties, and in compliance with any statutory time limits.

Where it is appropriate to the pupil's age and level of understanding, the pupil will also attend any consideration meeting, and will be enabled to make a representation on their own behalf if they desire to do so.

The governing body will consider the reinstatement of a suspended or excluded pupil, where:

- The exclusion is permanent.
- The suspension is fixed-period, and would bring the pupil's total number of suspended school days to more than 15 in any given term.
- The suspension or exclusion would result in the pupil missing a public examination.

In the case of a suspension where the pupil's total number of suspended days is more than 5 but less than 16 school days within a term, if parents make representations, the governing body will consider suspensions within 50 school days of receiving the notice of suspension. In the absence of any representations from parents, the governing body will consider the reinstatement on their own.

Where a suspension will take a pupil's total number of school days out of school above five but less than 15 for the term, and parents have not requested a governing body meeting, the governing body will not be required to consider the pupil's reinstatement but it will have the power to do so if it deems it appropriate.

Where a suspension will not bring a pupil's total number of days of suspension or permanent exclusion to more than five days in a term, the governing body will consider all representations made by parents; however, the governors cannot direct the reinstatement of the pupil and it is not required to arrange a meeting with parents.

Where suspension or exclusion would result in a pupil missing a public examination, the governing body will consider the suspension or exclusion before the test to decide whether the pupil should be reinstated in time to take the examination.

If it is not practicable for a sufficient number of governors to consider the decision before the examination, the chair of governors, or the vice chair of governors if necessary, will consider the suspension or exclusion alone and decide whether or not to reinstate the pupil.

In light of the above, the governing body will also consider whether it would be appropriate to allow the suspended or excluded pupil to enter the premises to take the examination.

When considering the reinstatement of a pupil, the governing body will:

- Only discuss the suspension or exclusion with the parties present at the meeting.
- Ask for any written evidence prior to the meeting.
- Circulate any written evidence and information to all parties, at least five school days in advance of the meeting.
- Allow pupils and parents to be accompanied by a person of their choice to the meeting.
- Consider what reasonable adjustments need to be made to support the attendance and contribution of parties at the meeting.
- Identify the steps needed to enable and encourage the suspended or excluded pupil to attend the meeting and speak on their behalf, or how they may contribute personal views by other means if attendance is not possible.
- Consider the interests and circumstances of the pupil, including the grounds for suspension or exclusion.

11. Reaching a decision

11.1. After considering exclusions, the governing body will either:

- Decline to reinstate the pupil.
- Direct the reinstatement of the pupil immediately, or on a specified date.

11.2. If reinstatement would make no practical difference, e.g. if the pupil has already returned to school following a fixed-period exclusion or the parents make clear they do not want their child reinstated, the governing body will still consider whether the pupil should be officially reinstated, and whether the headteacher's decision to exclude the pupil was fair, lawful and proportionate, based on the evidence presented.

11.3. The governing body will apply the civil standard of proof when responding to the facts relating to an exclusion, it is more likely than not that the facts are true.

11.4. To reach a decision, the governing body will:

- Identify the steps they intend to take to ensure that all parties involved will have the opportunity to participate and present their views.
- Ensure that minutes are taken of the meeting as a record of the evidence that was considered.
- Ask all parties to withdraw from the meeting before concluding their decision.

- Consider whether the exclusion of the pupil was lawful, proportionate and fair, taking into account the headteacher's legal duties and any evidence that was presented to the governing body in relation to the decision to exclude.
- Record the outcome of the decision on the pupil's educational records, along with copies, which will be kept for at least six months.
- Make a note of their findings, where they have considered an exclusion but cannot reinstate the pupil.

12. Notification of considered exclusions

- 12.1. The governing body will notify the parents of the excluded pupil, the headteacher and the LA of their decision following the consideration of an exclusion, in writing and without delay.
- 12.2. In the case of a permanent exclusion, where the governing body decides not to reinstate the pupil, they will notify the parents:
- That it is permanent, and their right for it to be reviewed by an independent review panel.
 - Of the date by which an application for review must be made.
 - Of the name and address of whom the review application should be submitted to.
 - That any application should set out the grounds on which it is being made and that, where appropriate, this should include reference to how a pupil's SEND are considered relevant to the exclusion.
 - That, regardless of whether a pupil has been identified as having SEND, the parents have a right to require the governing body to ensure a SEND expert attends the review.
 - Of the role of the SEND expert that will attend the review, and that the parents will not be charged for this.
 - That they are required to make it clear if they wish for a SEND expert to attend the review.
 - That they may appoint someone at their own expense to make representations to the panel.
- 12.3. The governing body will also notify parents that, if they believe an exclusion has been issued as a result of discrimination, then they are required to make a claim under the Equality Act 2010 to the First-tier Tribunal (SEND), and that this should be within six months of when the discrimination allegedly took place.
- 12.4. After any conclusion, the governing body will notify the parents, and all other parties involved, of the decision that was made and the reasoning for this, in sufficient detail.

13. Removing permanently excluded pupils from the school register

- 13.1. The headteacher will remove pupils from the school register if:

- 15 school days have passed since the parents were notified of the governing body's decision not to reinstate the pupil and no application for an independent panel review has been received.
 - The parents have stated in writing that they will not be applying for an independent panel review following a permanent exclusion.
- 13.2. If an application for an independent panel review has been made within 15 school days, the headteacher will wait until the review has been determined, or abandoned, and until the governing body has completed any reconsideration that the panel recommended or directed it to carry out, before removing the pupil from the school register.
- 13.3. If a pupil's name is to be removed from the register, the headteacher will make a return to the LA, which will include:
- All the particulars which were entered in the register.
 - The address of any parent with whom the pupil normally resides.
 - The grounds upon which the pupil's name is to be removed from the register.
- 13.4. Any return to the LA will be made as soon as the grounds for removal are met and no later than the date in which the pupil's name was removed.
- 13.5. If a pupil's name has been removed from the register and a discrimination claim is made, the pupil may be reinstated following a decision made by the First-tier Tribunal (SEND) or County Court.
- 13.6. Whilst a pupil's name remains on the admissions register, the appropriate code will be used to mark the pupil's attendance:
- Code B: Education off-site
 - Code D: Dual registration
 - Code E: Absent and not attending alternative provision

14. Independent review panel

- 14.1. The LA will review the governing body's decision not to reinstate a permanently excluded pupil, if the parents submit their application for this within the required time frame.
- 14.2. The LA will constitute an independent review panel of three or five members that represent the following categories:
- A lay member to chair the panel. This individual will not have worked in any school in a paid capacity.
 - A current or former school governor who has served for at least 12 consecutive months in the last five years.
 - A headteacher or individual who has been a headteacher within the last five years.
- 14.3. Parents are required to submit their applications within:

- 15 school days of the governing body's notification of their decision.
 - 15 school days of the final determination of a discriminatory claim made under the Equality Act 2010.
- 14.4. Any application made outside of this timeframe will not be reviewed.
- 14.5. Parents are able to request an independent panel review even if they did not make a case to, or attend, the governing body's initial consideration of the exclusion.
- 14.6. The LA will adhere to all statutory guidelines when conducting an independent panel review, as outlined in the DfE's statutory guidance document 'Exclusion from maintained schools, academies and pupil referral units in England' 2017.

15. Appointing a SEND expert

- 15.1. If requested by parents in their application for an independent review panel, the LA will appoint a SEND expert to attend the panel and cover the associated costs of this appointment.
- 15.2. The LA will make arrangements to indemnify the SEND expert against any legal costs and expenses reasonably incurred as a result of any decisions or actions connected to the review and which are taken in good faith.
- 15.3. Parents have a right to request the attendance of a SEND expert at a review, regardless of whether the school recognises that their child has SEND.
- 15.4. The SEND expert's role is set out in [section 15](#) of this policy.
- 15.5. Individuals will not serve as a SEND expert if they have, or at any time have had, any connection with the LA, school, parents or pupil, or the incident leading to the exclusion, which might reasonably be taken to raise doubts about their ability to act impartially; however, an individual is not taken to have such a connection solely because they are an employee of the LA.
- 15.6. The SEND expert will be a professional with first-hand experience of the assessment and support of SEND, as well as an understanding of the legal requirements on schools in relation to SEND. Examples of suitable individuals might include educational psychologists; specialist SEND teachers; SENCOs; and behaviour support teachers.
- 15.7. Recently retired individuals are not precluded from fulfilling this role; however, the LA will, during interview, assess the knowledge of such individuals in order to ensure that they have a good understanding of current practice and the legal requirements on schools in relation to SEND.
- 15.8. Whilst individuals are not automatically taken to be partial simply because they are an employee of, or contracted by, the LA, they will not have had any previous involvement in the assessment or support of SEND for the excluded pupil, or siblings of the excluded pupil. The LA will request that prospective SEND experts declare any conflict of interest at the earliest opportunity.

- 15.9. The final decision on the appointment of a SEND expert is for the LA to make, but it will take reasonable steps to ensure that parents have confidence in the impartiality and capability of the SEND expert. Where possible, this will include offering parents a choice of SEND expert. In order to meet its duties within the statutory time frame, the LA will consider maintaining a list of individuals capable of performing the role of SEND expert in advance of a request.
- 15.10. The LA will determine the amount of any payment in relation to the appointment of the SEND expert, such as financial loss, travel and subsistence allowances.

16. The role of a SEND expert

- 16.1. The SEND expert's role is analogous to an expert witness, providing (orally and/or written) impartial advice to the panel on how SEND might be relevant to the exclusion. The SEND expert will base their advice on the evidence provided to the panel. The SEND expert's role does not include making an assessment of the pupil's SEND.
- 16.2. The focus of the SEND expert's advice will be on whether the school's policies which relate to SEND, or the application of these policies in relation to the excluded pupil, were legal, reasonable and procedurally fair. If the SEND expert believes that this was not the case, they will, where possible, advise the panel on the possible contribution this could have made to the circumstances of the pupil's exclusion.
- 16.3. Where the school does not recognise that a pupil has SEND, the SEND expert will advise the panel on whether they believe the school acted in a legal, reasonable and procedurally fair way with respect to the identification of any SEND that the pupil may potentially have, and any contribution that this could have made to the circumstances of the pupil's exclusion.
- 16.4. The SEND expert will not criticise a school's policies or actions simply because they believe a different approach should have been followed or because another school might have taken a different approach.

17. Appointing a clerk

- 17.1. The LA will decide whether to appoint a clerk to the independent review panel, or to make alternative arrangements to administer the panel.
- 17.2. The LA will ensure that the clerk did not serve as clerk to the governing body when the decision was made not to reinstate the pupil.

18. The role of a clerk

- 18.1. The clerk's role is to provide advice to the panel and parties to the review on procedure, law and statutory guidance on exclusions.
- 18.2. The clerk will:

- Identify, in advance of the meeting, whether the excluded pupil wishes to attend the panel hearing, taking reasonable steps to enable the pupil to feedback their views, irrespective of their attendance.
- Identify, in advance of the meeting, whether any alleged victims of the incident(s) leading up to the exclusion wish to attend the panel hearing, taking reasonable steps to enable them to feedback their views, irrespective of their attendance.
- Ensure that the panel is able to hear from any witnesses to the incident(s) leading to the exclusion, taking into account the fact that some of these people may be pupils at the school (Pupils under 18-years-old will not be allowed to appear in person without parental consent).
- Inform the parents, headteacher, governing body and the LA, that they are entitled to: make oral and written representations to the panel; attend the hearing; and be represented.
- Ensure that all parties are:
 - Provided with copies of relevant papers at least five school days before the review, notifying the panel if any requested documents have not been provided in case the panel wishes to adjourn until a later date.
 - Informed about who is attending the meeting, and what their roles are.
- Attend the review and ensure that minutes are produced in accordance with instructions from the independent review panel.

18.3. Where a clerk is not appointed, the LA will undertake the functions outlined in paragraphs 16.1 and 16.2 of this policy.

19. The duties of independent review panel members in the conduct of a review panel

- 19.1. The role of the panel is to review the governing body's decision not to reinstate a permanently excluded pupil. In reviewing the decision, the panel will consider the interests and circumstances of the excluded pupil, including the circumstances in which the pupil was excluded, and have regard to the interests of other pupils and people working at the school.
- 19.2. The panel will apply the civil standard of proof, rather than the criminal standard of 'beyond reasonable doubt'.
- 19.3. Following the review, the panel will do one of the following:
- Uphold the decision.
 - Recommend that the governing body reconsiders reinstatement.
 - Quash the decision and direct that the governing body reconsiders reinstatement.
- 19.4. The panel's decision does not have to be unanimous and can be decided by a majority vote. It is binding on the pupil, parents, the governing body, headteacher and the LA.

20. Reconsidering reinstatement following a review

- 20.1. Where the independent review panel instructs the governing body to reconsider their decision not to reinstate a pupil, they will do so within 10 school days of being given notice of the review panel's decision.
- 20.2. The school is aware that if the governing body does not offer to reinstate the pupil, then a £4,000 adjustment will be made to the school's budget.
- 20.3. If, following reconsideration, the governing body offers to reinstate the pupil but the parents decline, no adjustment will be made to the school's budget.
- 20.4. Following reconsideration, the governing body will notify the parents, the headteacher and the LA of their reconsidered decision and the reasons for this.

21. Criminal investigations

- 21.1. The headteacher will not postpone taking a decision to exclude a pupil due to a police investigation being underway, or any criminal proceedings that are in place.
- 21.2. The headteacher will give particular consideration when deciding to exclude a pupil where evidence is limited by a police investigation, to ensure that any decision made is fair and reasonable.
- 21.3. If the governing body is required to consider the headteacher's decision in these circumstances, they will not postpone the meeting and will make a decision based on the evidence available.

22. Training requirements

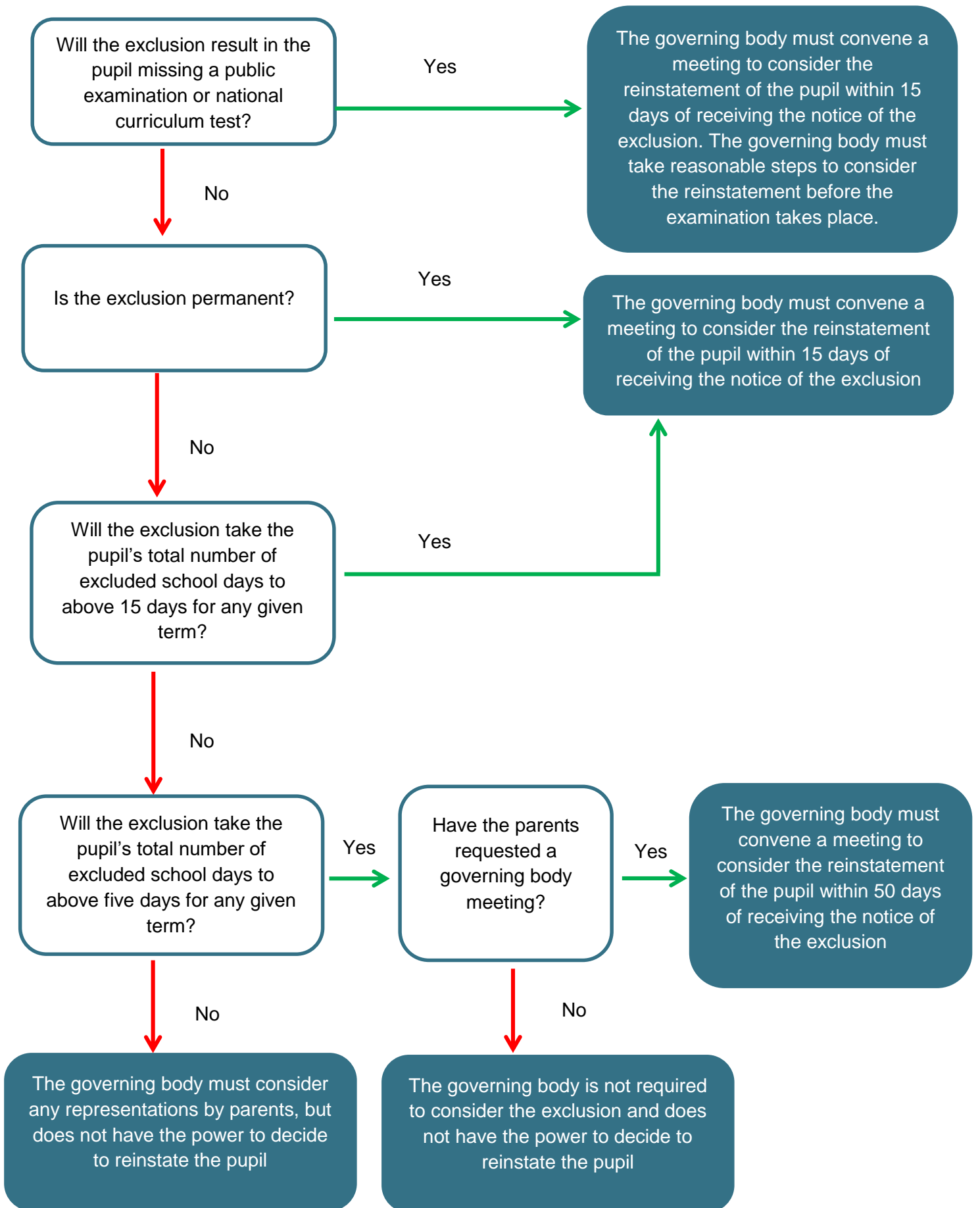
- 22.1. The LA will ensure that all independent review panel members and clerks have received training within the two years prior to the date of the review.
- 22.2. Training will cover:
 - The requirements of the legislation, regulations and statutory guidance governing exclusions.
 - The need for the panel to observe procedural fairness and the rules of natural justice.
 - The role of the chair of a review panel.
 - The role of the clerk to a review panel.
 - The duties of headteachers, governing bodies and the panel under the Equality Act 2010.
 - The effect of section 6 of the Human Rights Act 1998 and the need to act in a manner compatible with human rights protected by that Act.
- 22.3. Clerks will also have an up-to-date understanding on developments in case law which are relevant to exclusion.

23. Using data

The headteacher will ensure that all data regarding suspensions and exclusions is collected and provided to the governing board on a **termly** basis. The governing body will review this data regularly in order to:

- Consider the level of pupil moves and the characteristics of pupils who are moving on any permanent exclusions to ensure that this is only being used as a last resort.
- Gather information on pupils who are taken off the roll and those who are on the roll but attending education off-site.
- Consider the effectiveness and consistency in implementing the Behaviour Policy.
- Understand any variations in the rolling average of permanent exclusions to ensure they are only used when necessary.
- Understand the characteristics of suspended and excluded pupils and evaluate equality considerations.
- Gather information on where pupils are receiving repeat suspensions.
- Evaluate interventions in place to support pupils at risk of suspension and exclusion, including where there are patterns which may indicate that certain policies and support measures are or are not working.
- Analysing whether the placements of pupils directed off-site into alternative provision are reviewed at sufficient intervals to assure that the education is achieving its objectives.

Reviewing the Headteacher's Exclusion Decision



PERSON(S) RESPONSIBLE:	L Satchwell
DATE POLICY AGREED:	November 2022
TO BE REVIEWED BY:	November 2025
DISTRIBUTION:	Staff / Governors / Website (delete as required)