

# Climate Action Plan



**Stoke Prior First School**



# CLIMATE ACTION PLAN



At Stoke Prior First School, we believe that small actions can lead to big changes, and we're excited to take steps toward a greener, more sustainable future. Our Climate Action Plan is all about creating a positive impact on the environment while inspiring our students, staff, and families to work together for a cleaner, healthier world.

From reducing waste to saving energy, we are committed to making eco-friendly choices that will benefit not only our school but the community around us. By embracing these efforts, we hope to encourage everyone at Stoke Prior First School to become climate champions and help build a brighter, more sustainable tomorrow.

## SUMMARY

In progress: 7 items  
Not started: 9 items  
Completed: 14 items





Section

# DECARBONISATION

## CARRY OUT A BUILDING ENERGY AUDIT

Conducting a building energy audit helps schools pinpoint areas of energy waste, from heating inefficiencies to unnecessary lighting. Schools can use professional energy assessors or pupil-led monitoring programs to analyse energy usage and recommend improvements. Findings can inform decisions on insulation, lighting upgrades, and behaviour-based energy-saving strategies.

**NOT STARTED**

## REPLACE WINDOWS WITH ENERGY-EFFICIENT GLAZING

Replacing old, single-glazed windows with energy-efficient double or triple glazing improves insulation, reducing the need for heating in winter and cooling in summer. This upgrade enhances classroom comfort, lowers energy bills, and supports sustainability goals. Schools with outdated windows can apply for grants or funding to offset costs.

**NOT STARTED**





Section

# DECARBONISATION

## TRAVEL SURVEY

A travel survey helps schools gather data on pupil and staff commuting habits. By understanding travel patterns, schools can identify opportunities to encourage more sustainable travel options such as walking, cycling, carpooling, or using public transport. This information can support decisions on bike rack installations, road safety improvements, and incentive programs for eco-friendly commuting.

**NOT STARTED**

## INSTALL LED LIGHTING

LED lighting is a cost-effective and energy-efficient alternative to traditional incandescent and fluorescent bulbs. By switching to LED lighting, schools can significantly reduce electricity consumption and maintenance costs while lowering their carbon footprint. LED bulbs also generate less heat, improving classroom comfort and reducing the need for air conditioning.

*Started: 1st Sep 2025*

**IN PROGRESS**





Section

# DECARBONISATION

## RUN A SWITCH OFF CAMPAIGN

A switch-off campaign raises awareness about energy consumption and encourages simple behavioural changes to reduce waste. Schools can run competitions, put up reminder posters, and conduct audits to track energy savings. Engaging pupils through classroom discussions and real-time energy monitoring can make energy efficiency a long-term habit.

*Started: 1st Sep 2025*

**IN PROGRESS**

## UPGRADE ELECTRICAL APPLIANCES TO ENERGY-EFFICIENT ALTERNATIVES

Schools can significantly reduce electricity consumption by upgrading to energy-efficient appliances, including LED lighting, low-energy projectors, and efficient kitchen equipment. Energy Star-rated devices and appliances use less power, lowering operational costs and environmental impact. Schools should prioritise replacing older, inefficient devices first to maximise savings.

*Started: 1st Sep 2025*

**IN PROGRESS**



Section

# DECARBONISATION

## DELIVER SOME LESSONS OUTSIDE

Outdoor lessons provide pupils with fresh air and a change of scenery while reducing reliance on indoor lighting and heating. Whether it's reading in a shaded area, conducting science experiments outside, or using school gardens for hands-on learning, outdoor education fosters engagement and sustainability awareness.

*Started: 26th Aug 2025*

*Completed: 26th Aug 2025*

**COMPLETED**

## INSTALL SOLAR PANELS

Installing solar panels requires an MCS certified installer to install them. They will normally be able to give you an idea of the amount of solar panels that can fit on the premises. You'll need to also decide if you would like a battery system as well, to help store energy during winter months when there is less sunshine available.

*Started: 1st Sep 2025*

*Completed: 1st Sep 2025*

**COMPLETED**



Section

# ADAPTATION & RESILIENCE

## AUDIT AND REDUCE SINGLE-USE PLASTICS

Schools can conduct an audit of their plastic use, identifying areas where single-use plastics can be eliminated or replaced with sustainable alternatives. This includes plastic cutlery, straws, and packaging materials. Encouraging the use of reusable water bottles and lunch containers can also contribute to waste reduction.

**NOT STARTED**

## PLAN A SCHOOL-WIDE ENERGY REDUCTION CHALLENGE

Engaging pupils and staff in an energy-saving challenge builds awareness and encourages sustainable habits. Schools can track electricity consumption and reward classrooms that achieve the highest reductions.

**NOT STARTED**



Section

# ADAPTATION & RESILIENCE

## SOURCE CLEANING PRODUCTS WITH ECO-CERTIFICATIONS.

Traditional cleaning products contain harmful chemicals that can pollute water and air. Schools can transition to eco-friendly alternatives certified by environmental agencies, reducing exposure to toxins and supporting sustainability efforts.

*Started: 1st Sep 2025*

**IN PROGRESS**

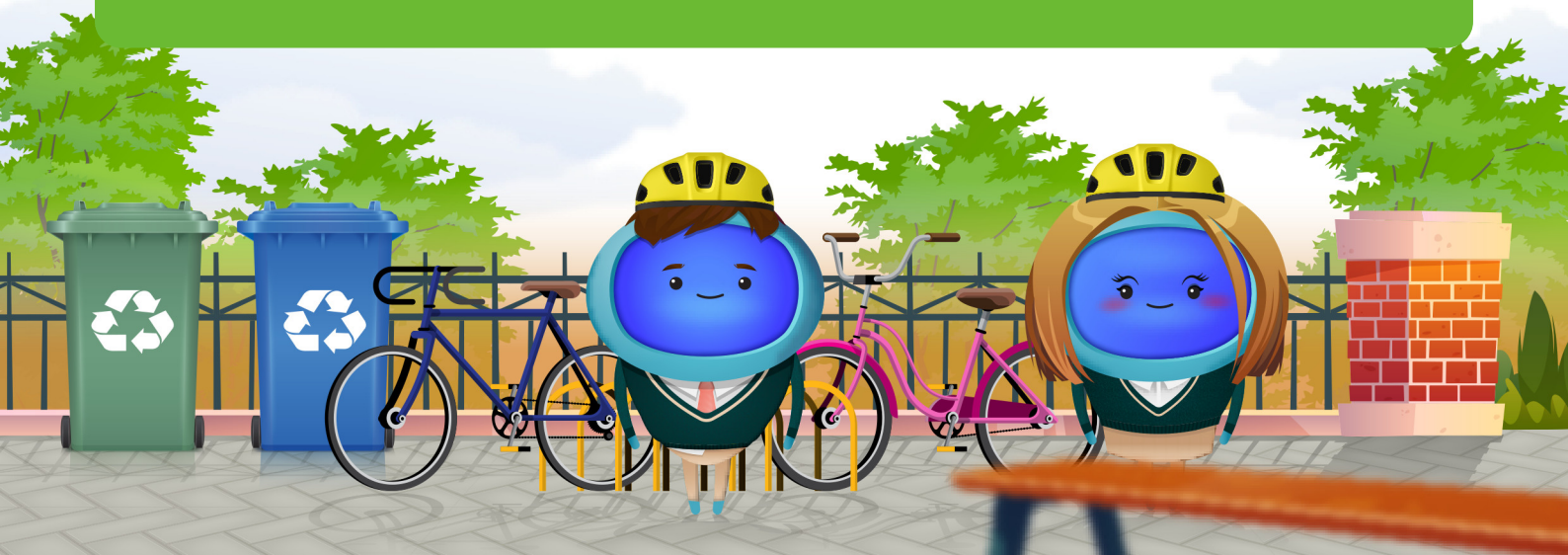
## CREATE A HEATWAVE HEALTH AND SAFETY ASSESSMENT

As heatwaves become more common due to climate change, schools must ensure the wellbeing of pupils and staff during extreme temperatures. A heatwave health and safety assessment should include installing shaded seating areas, increasing hydration points, improving ventilation, and adjusting schedules during hot weather. Proactive planning helps prevent heat-related illnesses while fostering a healthier, more resilient learning environment.

*Started: 1st Sep 2025*

*Completed: 1st Sep 2025*

**COMPLETED**



Section

# ADAPTATION & RESILIENCE

## DEVELOP A RAINWATER HARVESTING SYSTEM

Installing a rainwater harvesting system allows schools to collect rainwater for irrigation, toilet flushing, and other non-drinking uses. This reduces reliance on municipal water supplies and helps schools become more self-sufficient. Additionally, rainwater collection can be integrated into sustainability lessons for pupils.

*Started: 1st Sep 2025*

*Completed: 1st Sep 2025*

**COMPLETED**

## DEVELOP A WATER CONSERVATION STRATEGY

Schools can adopt water-saving measures such as dual-flush toilets, drought-resistant landscaping, and leak monitoring systems. Educating students on responsible water use can further enhance conservation efforts.

*Started: 1st Sep 2025*

*Completed: 1st Sep 2025*

**COMPLETED**



Section

# ADAPTATION & RESILIENCE

## INSTALL WATER BUTTS

Water butts allow schools to collect and store rainwater, reducing dependence on mains water for irrigation, cleaning, and other non-drinking purposes. This initiative helps conserve water, cut utility costs, and educate pupils on sustainable water management practices. Schools implementing water butts can use them to water gardens, supply outdoor play areas, and even contribute to science lessons on water conservation.

*Started: 1st Sep 2025*

*Completed: 1st Sep 2025*

**COMPLETED**



Section

# ADAPTATION & RESILIENCE

## PLANT TREES TO CREATE SHADED AREAS

Planting trees strategically around the school campus provides natural cooling, reducing the need for artificial cooling systems during hot months. Trees also improve air quality by filtering pollutants, enhance biodiversity by providing habitats for birds and insects, and create inviting outdoor learning spaces. As they grow, trees contribute to carbon sequestration, offsetting a portion of the school's emissions while simultaneously improving pupil wellbeing.

*Started: 1st Sep 2025*

*Completed: 1st Sep 2025*

**COMPLETED**

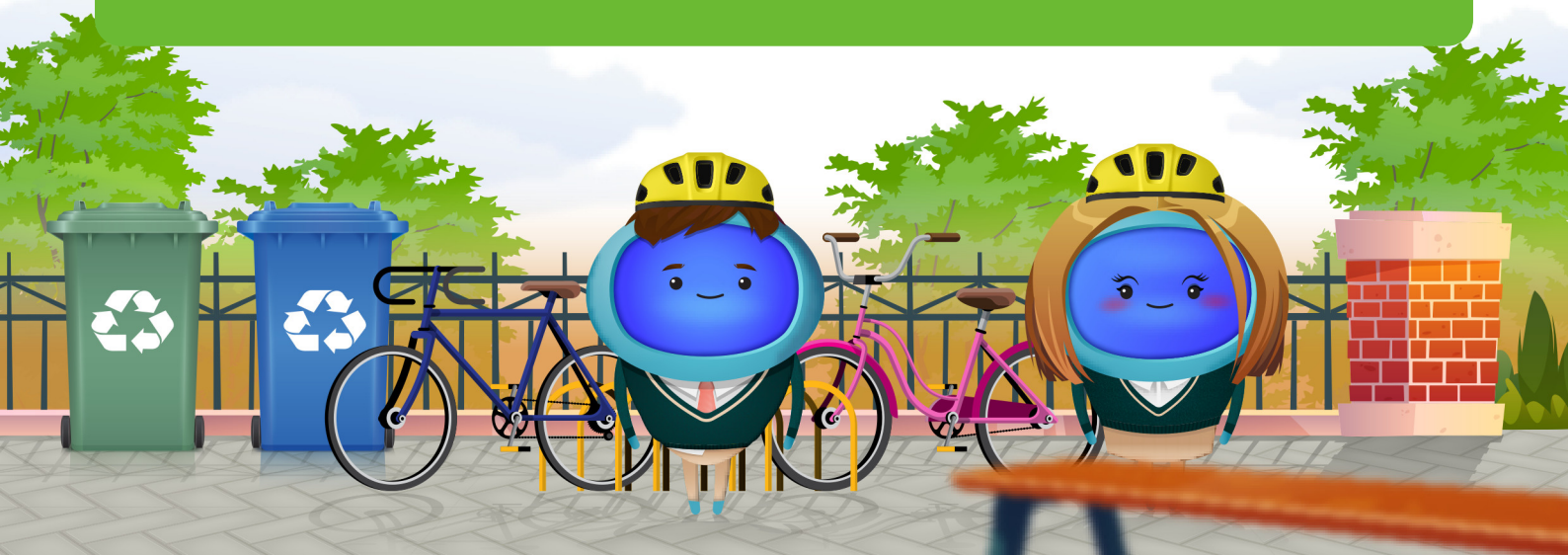
## SET UP A SCHOOL RESILIENCE COMMITTEE

Establishing a resilience committee ensures ongoing adaptation to environmental challenges. This team, composed of pupils, staff, and community members, can assess risks, implement sustainability policies, and coordinate resilience projects. Regular meetings will help track progress and adjust strategies as needed.

*Started: 1st Sep 2025*

*Completed: 1st Sep 2025*

**COMPLETED**



Section

# ADAPTATION & RESILIENCE

## SWITCH TO RECYCLED PAPER FOR PRINTING

Schools can significantly reduce their environmental impact by switching to recycled or FSC-certified paper for printing. Recycled paper manufacturing requires less water and energy compared to virgin paper, reducing carbon emissions. Schools should also consider digital alternatives to minimise paper use.

*Started: 1st Sep 2025*

*Completed: 1st Sep 2025*

**COMPLETED**





Section

# BIODIVERSITY

## PARTICIPATE IN THE RSPB BIRDWATCH

Schools can engage pupils in the Royal Society for the Protection of Birds (RSPB) Birdwatch, an annual citizen science event where participants record and report bird sightings. This initiative helps develop observation skills, raises awareness of biodiversity, and contributes valuable data for conservation efforts. Schools can integrate this activity into science and geography lessons to reinforce learning.

**NOT STARTED**

## BUILD AN INSECT HOTEL

Log piles and disused wood pallets can be used to create a natural habitat for insects, amphibians, and fungi, enhancing biodiversity and promoting decomposition processes. They can be strategically placed in school gardens to serve as learning tools for ecology studies.

*Started: 1st Sep 2025*

**IN PROGRESS**





Section

# BIODIVERSITY

## CREATE A SCHOOL POLLINATOR GARDEN

A school pollinator garden provides a habitat for bees, butterflies, and other beneficial insects. By planting native wildflowers and nectar-rich plants, schools can contribute to biodiversity and support local ecosystems. These gardens also serve as valuable outdoor learning spaces where pupils can observe pollination in action and learn about the role of insects in food production.

*Started: 1st Sep 2025*

**IN PROGRESS**

## JOIN COMMUNITY INITIATIVES

Community environmental initiatives such as tree planting, litter picking, or local green space protection projects can provide excellent opportunities for pupils and staff to make a positive impact on their local environment. These initiatives also help build a culture of sustainability within your school or MAT.

*Started: 1st Sep 2025*

**IN PROGRESS**



Section

# BIODIVERSITY

## GET A COMPOST BIN TO REDUCE FOOD WASTE

Composting helps reduce landfill waste while creating nutrient-rich soil for school gardens. Schools should consider site suitability, maintenance requirements, and pest prevention strategies. Composting can also be incorporated into science lessons, providing pupils with hands-on learning about decomposition and soil health. Schools with kitchen facilities can work with catering teams to compost food scraps, further reducing waste.

*Started: 26th Aug 2025*

*Completed: 1st Sep 2025*

**COMPLETED**



Section

# BIODIVERSITY

## WORK WITH THE PUPILS TO GET THEIR VIEWS ON HOW THE SCHOOL SITE SHOULD LOOK

Schools can involve pupils in decision-making about their learning environment, ensuring that sustainability considerations are incorporated. Whether through workshops, surveys, or school councils, pupil input can lead to more effective green space planning, improved outdoor learning areas, and projects that align with their needs and interests. Involving pupils also increases their sense of ownership and responsibility for the school environment.

*Started: 1st Sep 2025*

*Completed: 1st Sep 2025*

**COMPLETED**



Section

# CLIMATE EDUCATION & GREEN SKILLS

## HOST A SUSTAINABILITY-THEMED ASSEMBLY EACH TERM

Hosting a sustainability-themed assembly each term ensures that pupils remain engaged with environmental topics. These events can feature guest speakers, pupil-led presentations, and school-wide challenges to encourage participation. Assemblies help build a culture of sustainability and reinforce its importance throughout the school community.

**NOT STARTED**

## ORGANISE A PUPIL-LED ENERGY AND WASTE AUDIT

A school-wide audit allows pupils to evaluate energy use and waste production, identifying areas for improvement. This hands-on approach helps pupils understand real-world sustainability challenges and implement practical solutions such as reducing electricity use, recycling more effectively, and cutting down on single-use plastics.

**NOT STARTED**



Section

# CLIMATE EDUCATION & GREEN SKILLS

## ORGANISE A WALK TO SCHOOL WEEK

Encouraging pupils and staff to walk, bike, or use public transport instead of driving can reduce emissions and improve local air quality. A Walk to School Week helps raise awareness about the environmental and health benefits of active travel.

**NOT STARTED**

## CREATE A SCHOOL ECO COMMITTEE

A school eco committee gives pupils the opportunity to lead sustainability projects, influence school policies, and advocate for environmental improvements. This initiative fosters leadership, encourages responsibility, and ensures sustainability remains a core focus in school decision-making.

*Started: 26th Aug 2025*

*Completed: 26th Aug 2025*

**COMPLETED**



Section

# CLIMATE EDUCATION & GREEN SKILLS

## DEVELOP AN OUTDOOR LEARNING PROGRAM FOCUSED ON NATURE

Outdoor learning programs provide pupils with hands-on experiences in nature, teaching them about local ecosystems, biodiversity, and conservation. Schools can create learning gardens, conduct nature walks, or collaborate with conservation groups to enhance pupil engagement with the environment.

*Started: 1st Sep 2025*

*Completed: 1st Sep 2025*

**COMPLETED**

## IMPLEMENT A SUSTAINABLE SCHOOL UNIFORM POLICY

Schools can work with suppliers to source uniforms made from organic, recycled, or ethically produced materials. Encouraging second-hand uniform sales and repair workshops can further reduce waste and environmental impact.

*Started: 1st Sep 2025*

*Completed: 1st Sep 2025*

**COMPLETED**

